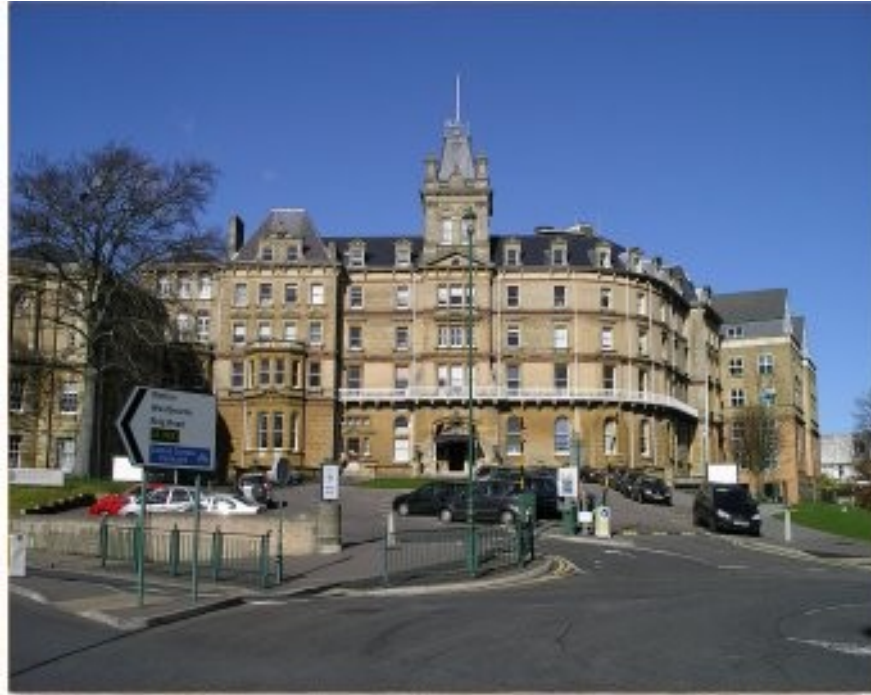


What is Bournemouth Council doing playing at Farming with Taxpayers money?



They appear to be deliberately trying to push the public off their own land giving preference to cows.

Thus fencing the land off to the public for the grazing of just ten cows in an area of land a mile and a half long by a quarter of a mile wide, read more to see why.

Land before cows devastated the area



The same land a year later made rough and rugged



Opposite direction same land year later you could easily break an ankle.



Below rough and rugged **made dangerous and difficult terrain.**
They appear to be deliberately trying to push the public off their own land.



You can see exactly where this is in the **Nature Reserve** by the **pylon**.



What is the council doing spending thousands of pounds of Ratepayers Money on Cattle Pens?



Thousands £'s of **YOUR Money** on Cattle Pens. *WHY?*
Considering Bus services are being **CUT including School Buses.**



Link to report via [Daily Mail](#)

Marilyn Duffy trampled to death by a herd of cows as she walked her dog.

3rd September 2011



A nature reserve is an area reserved in its original state, to put up fencing and use as like Farmland decreases your ability to let your dogs roam freely. Thus only the smallest area of this proposed scheme outside of the fences is that which would be left of the Nature Reserve. **This land is at present the peoples the council are the wardens working for you the public.**

Alzheimer's And CJD Scientifically Linked

Medical report by
By Michael Greger

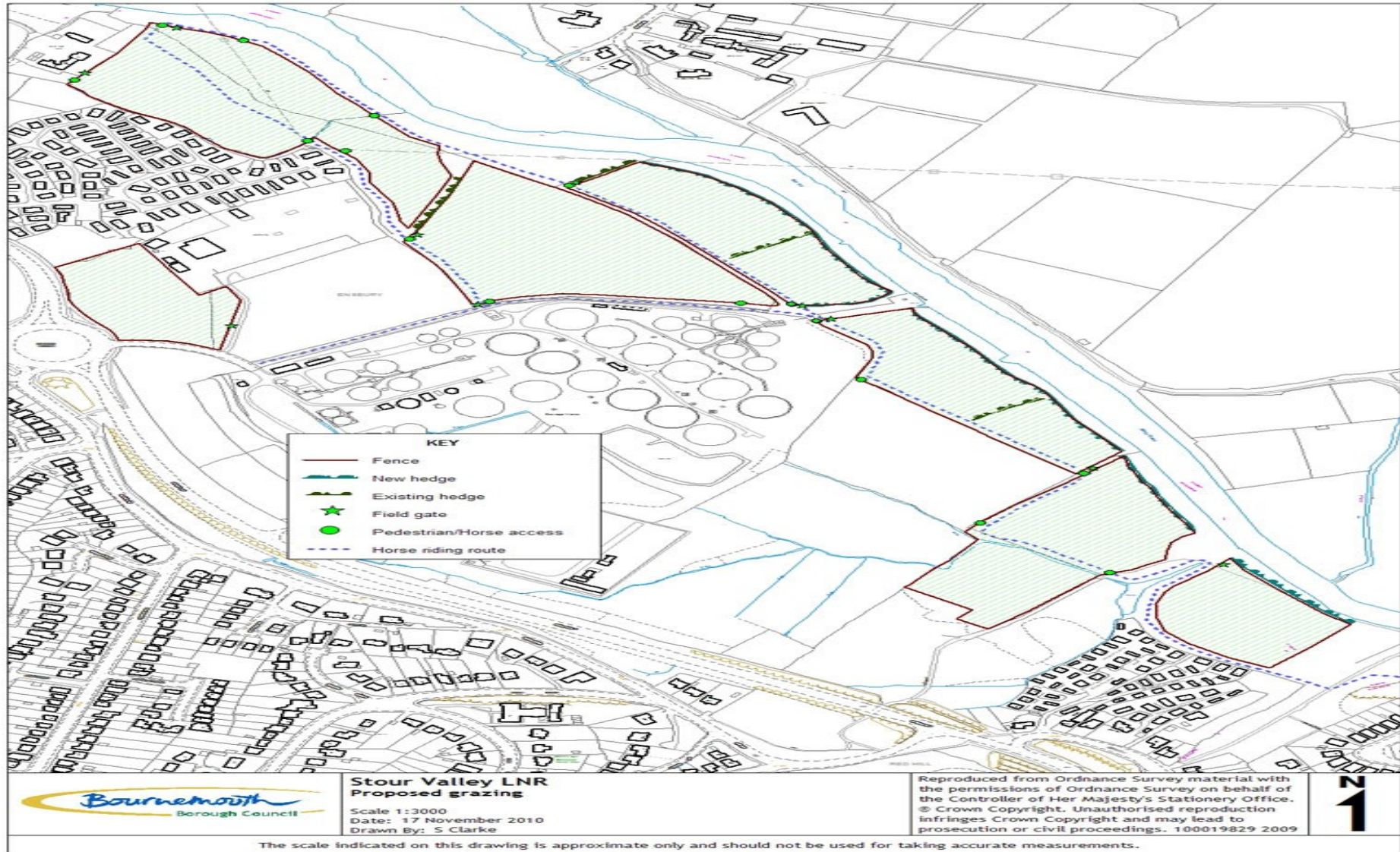
12-29-03

Direct link to article [here.](#)

Yes indeed your government and other countries Governments have kept it a secret that **Alzheimer disease, senile dementia is directly linked to Mad Cow Disease** otherwise known as **CJD.**

Hence we must consider the serious **dangers of encouraging human interaction** with cows in general.

Does this not look like a Land Grab considering just ten cows?



Ask yourselves why is the Town Council playing at being Farmers by spending Thousands of £'s of **YOUR Money**?

Ask yourselves why is the Town Council is spending Thousands £'s of **YOUR Money on fences for Just Ten Cows?**

On a strip of land a mile and a half long and quarter of a mile wide.

The answer is simple, the land in the Stour Valley Nature Reserve has been **set-aside from monies they have received from thousands of developers. Yet now they the council seek to take back that land given to you all to use by simply putting up fencing for after **Eight Years** the land then would revert back to the Council.**

The logical explanation is no doubt to sell later when the market price rises once the recession is over.

**Presentation given by
Carl Barron
Chairman of A.G.P.C.U.K.**

Action Group for the Protection of Communities UK

